

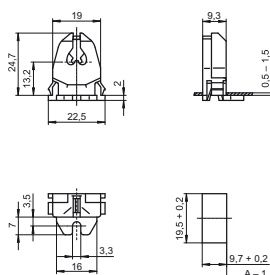
G5 Lampholders, Accessories

For fluorescent lamps T5 (T16)

Max. permitted temperature T_m
on the rear side of the lampholder: 110 °C

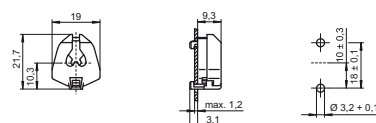
G5 push-through/surface-mounted lampholder
Lamp axis push-through lampholder: 13.2 mm
Lamp axis surface-mounted lampholder: 15.2 mm
Casing: PC, white, T110
Nominal rating: 2/500
Push-in terminals: 0.5–1 mm²
Lateral fixing clips for wall thickness 0.5–1.5 mm
Fixing slot for screw M3
Weight: 3.2 g, unit: 1000 pcs.
Type: 09105

Ref. No.: 100305



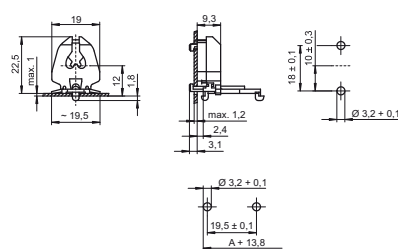
G5 built-in lampholder
Casing: PC, white, T110
Nominal rating: 2/500
Push-in terminals: 0.5–1 mm²
Rear split pins for wall thickness up to 1.2 mm
Weight: 2.6 g, unit: 1000 pcs.
Type: 09205

Ref. No.: 100310



G5 built-in/push-fit lampholder
Lamp axis: 12 mm
Casing: PC, white, T110
Nominal rating: 2/500
Push-in terminals: 0.5–1 mm²
Rear split pins for wall thickness up to 1.2 mm
Base split pins for wall thickness up to 1 mm
Weight: 2.9 g, unit: 1000 pcs.
Type: 09210

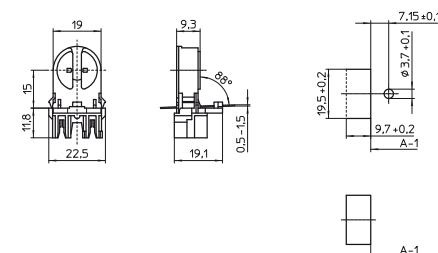
Ref. No.: 106455



G5 push-through lampholders
For the automatic luminaire wiring
Casing: PBT GF, white, frontplate: PC, white
Rotor: PBT GF, white, T140, lamp axis: 15 mm
Nominal rating: 2/500
IDC terminals for leads H05V-U 0.5
Lateral fixing clips for wall thickness 0.5–1.5 mm
Weight: 5 g, unit: 1000 pcs.
Type: 09420/ 09421

Ref. No.: 532377 with stop

Ref. No.: 532378 without stop



G5 push-through lampholders

For the automatic luminaire wiring

Casing: PBT GF, white, frontplate: PC, white

Rotor: PBT GF, white, T140, lamp axis: 20 mm

Nominal rating: 2/500

IDC terminals for leads H05V-U 0.5

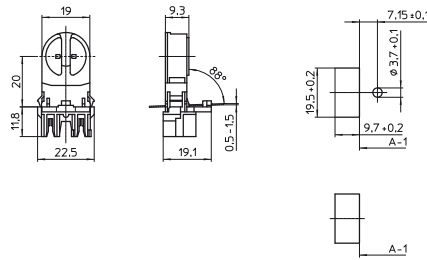
Lateral fixing clips for wall thickness 0.5–1.5 mm

Weight: 5.6 g, unit: 1000 pcs.

Type: 09422/09423

Ref. No.: 532379 with stop

Ref. No.: 532380 without stop



G5 push-fit lampholder

For the automatic luminaire wiring

Lamp axis: 18 mm

Casing: PC, white, rotor: PBT GF, white, T130

Nominal rating: 2/500

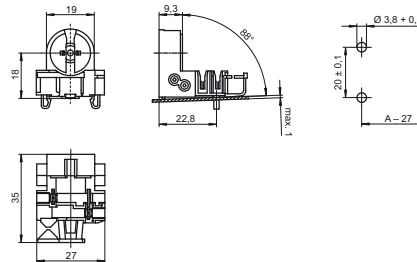
IDC terminals for leads H05V-U 0.5

Lateral push-in twin terminals: 0.5–1 mm²

Weight: 5.5 g, unit: 1000 pcs.

Type: 09900

Ref. No.: 534644



G5 built-in lampholders

For the automatic luminaire wiring

Casing: PC, white, rotor: PBT GF, white, T130

Nominal rating: 2/500

IDC terminals for leads H05V-U 0.5

Rear split pins for wall thickness up to 1.2 mm

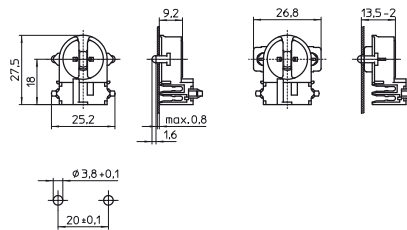
Weight: 3.7/4.1 g, unit: 1000 pcs.

Type: 09145

Ref. No.: 501533

Type: 09146 with spring adjustment

Ref. No.: 501534



G5 built-in lampholder

Casing: PBT GF, white, rotor: PBT GF, white

T140, nominal rating: 2/500

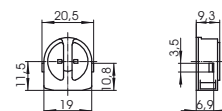
Push-in twin terminals: 0.5–1 mm²

Lateral fixing clips

Weight: 2.8 g, unit: 1000 pcs.

Type: 09404

Ref. No.: 505732



G5 built-in lampholders

Casing: PBT GF, white, rotor: PBT GF, white

T140, nominal rating: 2/500

Push-in twin terminals: 0.5–1 mm²

Rear split pins for wall thickness up to 1.2 mm

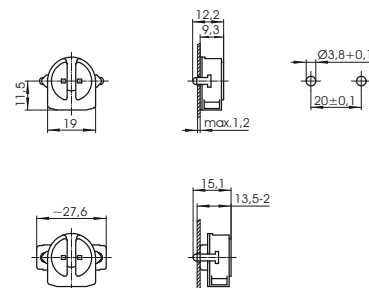
Weight: 2.9/3.3 g, unit: 1000 pcs.

Type: 09405

Ref. No.: 505733

Type: 09406 with spring adjustment

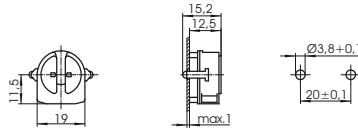
Ref. No.: 505734



G5 built-in lampholder

Lampholder thickness: 12.5 mm
 Casing: PBT GF, white, rotor: PBT GF, white
 T140, nominal rating: 2/500
 Push-in twin terminals: 0.5–1 mm²
 Rear split pins for wall thickness up to 1 mm
 Weight: 3 g, unit: 1000 pcs.
 Type: 09407

Ref. No.: 508590



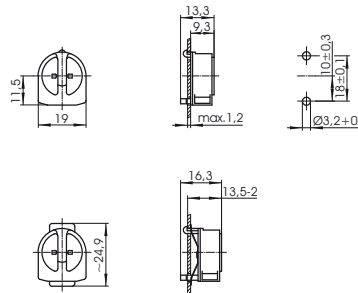
G5 built-in lampholders

Casing: PBT GF, white, rotor: PBT GF, white
 T140, nominal rating: 2/500
 Push-in twin terminals: 0.5–1 mm²
 Rear split pins for wall thickness up to 1.2 mm
 Weight: 2.9/3.2 g, unit: 1000 pcs.
 Type: 09415

Ref. No.: 505735

Type: 09416 with spring adjustment

Ref. No.: 505736

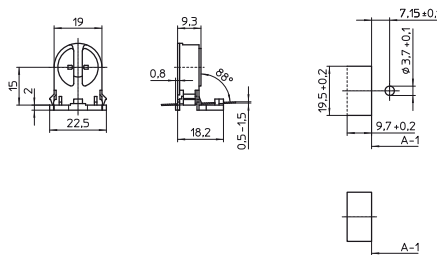


G5 push-through lampholders

Lamp axis: 15 mm
 Casing: PBT GF, white, rotor: PBT GF, white
 T140, nominal rating: 2/500
 Push-in twin terminals: 0.5–1 mm²
 Lateral fixing clips for wall thickness 0.5–1.5 mm
 Weight: 3.5/3.4 g, unit: 1000 pcs.
 Type: 09420/09421

Ref. No.: 505737 with stop

Ref. No.: 505739 without stop

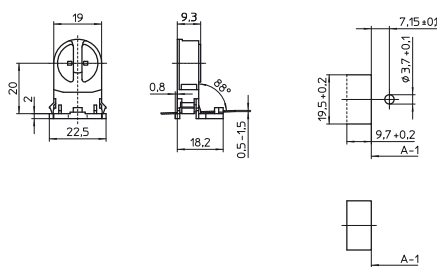


G5 push-through lampholders

Lamp axis: 20 mm
 Casing: PBT GF, white, rotor: PBT GF, white
 T140, nominal rating: 2/500
 Push-in twin terminals: 0.5–1 mm²
 Lateral fixing clips for wall thickness 0.5–1.5 mm
 Weight: 3.7 g, unit: 1000 pcs.
 Type: 09422/09423

Ref. No.: 505740 with stop

Ref. No.: 505741 without stop

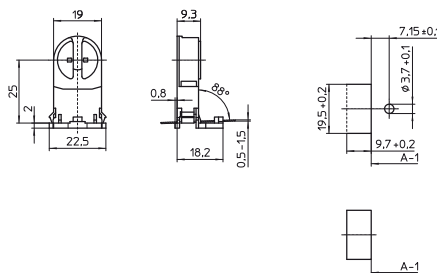


G5 push-through lampholders

Lamp axis: 25 mm
 Casing: PBT GF, white, rotor: PBT GF, white
 T140, nominal rating: 2/500
 Push-in twin terminals: 0.5–1 mm²
 Lateral fixing clips for wall thickness 0.5–1.5 mm
 Weight: 4 g, unit: 1000 pcs.
 Type: 09424/09425

Ref. No.: 505742 with stop

Ref. No.: 505744 without stop



G5 push-fit lampholder

Lamp axis: 11.8 mm

Casing: PBT GF, white, rotor: PBT GF, white

T140, nominal rating: 2/500

Push-in twin terminals: 0.5–1 mm²

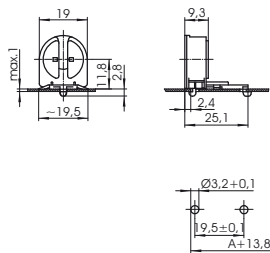
Base split pins for wall thickness up to 1 mm

lateral wiring

Weight: 3.1 g, unit: 1000 pcs.

Type: 09460

Ref. No.: 505751



G5 built-in/push-fit lampholder

Lamp axis: 11.8 mm

Casing: PBT GF, white, rotor: PBT GF, white

T140, nominal rating: 2/500

Push-in twin terminals: 0.5–1 mm²

Rear split pins for wall thickness up to 1.2 mm

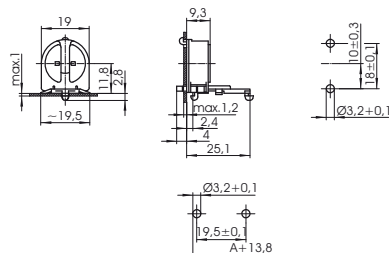
Base split pins for wall thickness up to 1 mm

lateral wiring

Weight: 3.2 g, unit: 1000 pcs.

Type: 09465

Ref. No.: 508314



G5 lampholder

For push-fit onto the lamp

Casing: PBT GF, white, T130

Nominal rating: 2/500

Push-in twin terminals: 0.5–1 mm²

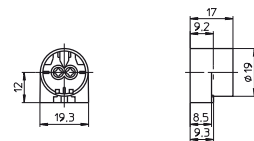
Pin support for reliable contact

For lamp support 109685

Weight: 3.7 g, unit: 1000 pcs.

Type: 09170

Ref. No.: 109686



Lamp support for lamps Ø 16 mm

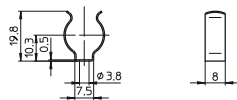
Material: zinc-coated polished steel

Fixing hole for screw M3.5

Weight: 1.3 g, unit: 1000 pcs.

Type: 94088

Ref. No.: 109685



Lamp support for lamps Ø 16 mm

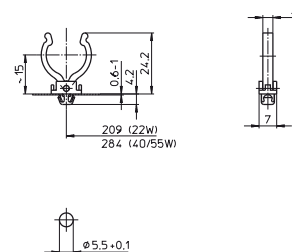
Material: PC, white, UV-stabilised

Push-fit foot for cut-out Ø 5.5 mm

Weight: 1 g, unit: 500 pcs.

Type: 84001

Ref. No.: 500757



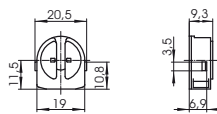
G5 Twin Lampholder

For fluorescent lamps T5 (T16)

Max. permitted temperature T_m
on the rear side of the lampholder: 110 °C

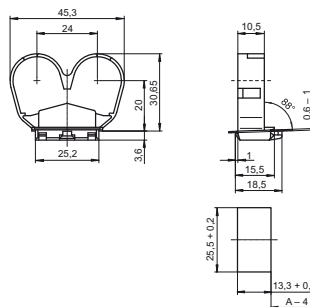
G5 built-in lampholder
Casing: PBT GF, white, rotor: PBT GF, white
T140, nominal rating: 2/500
Push-in twin terminals: 0.5–1 mm²
Lateral fixing clips
Weight: 2.8 g, unit: 1000 pcs.
Type: 09404

new >>> Ref. No.: 505732



Push-fit bracket
For two G5 built-in lampholders 505732
Material: PC, white
Lamp axis: 20 mm
Distance between two lamp axes: 24 mm
Push-fit foot for wall thickness 0.5–1 mm
Weight: 3.5 g, unit: 1000 pcs.
Type: 97677

new >>> Ref. No.: 507562



G5 Lampholders, Degree of Protection IP54/IP65/IP67

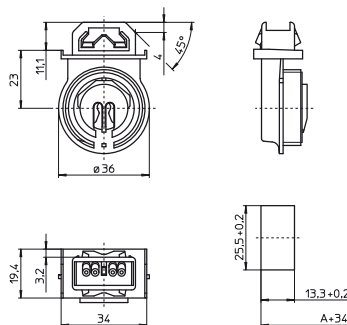
For fluorescent lamps T5 (T16) For luminaires of protection class I and II

Lampholders protected against dust and splashing water (IP54)
Lampholders protected against dust and jet of water (IP65)
Dust and watertight lampholders (IP67)

Pin support for reliable contact
With spring adjustment
Max. permitted temperature T_m
on the rear side of the lampholder: 110 °C

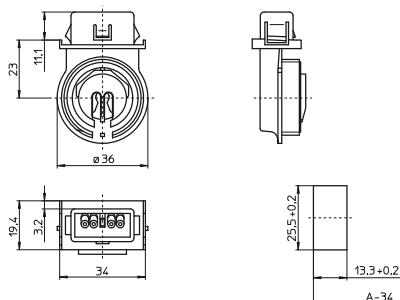
G5 push-fit lampholder for metal casing
Casing: PC, white, interior part: PBT GF
T140, nominal rating: 2/500
Push-in twin terminals: 0.5–1 mm²
Push-fit foot for wall thickness: 1.4–2 mm
Weight: 11.3 g, unit: 250 pcs.
Type: 84101 system 153

Ref. No.: 529832



G5 push-fit lampholder for plastic casing
 Casing: PC, white, interior part: PBT GF
 T140, nominal rating: 2/500
 Push-in twin terminals: 0.5–1 mm²
 Push-fit foot for wall thickness: 0.4–1 mm
 Weight: 11.6 g, unit: 250 pcs.
 Type: 84104 system 154

Ref. No.: 530535



Foot gaskets for systems 153 and 154

Weight: 0.5/0.7/0.7 g

Unit: 1000 pcs.

Type: 98002 degree of protection IP67

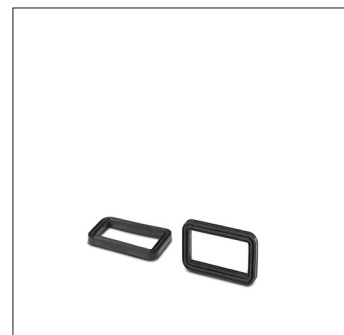
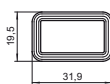
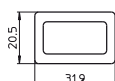
Ref. No.: 108947 material: PE foam

Type: 98087 degree of protection IP67

Ref. No.: 503773 material: EPDM, black

Type: 98003 degree of protection IP54

Ref. No.: 108266 material: EPDM, black



G5 push-fit lampholder

Casing: PC, white, interior part: PBT GF

T140, nominal rating: 2/500

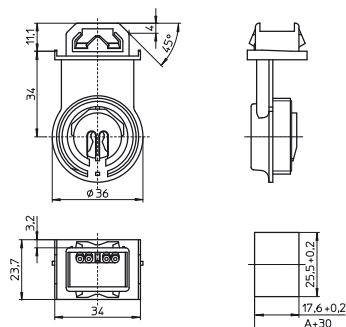
Push-in twin terminals: 0.5–1 mm²

Push-fit foot for wall thickness: 1.4–2 mm

Weight: 12.7 g, unit: 250 pcs.

Type: 84108 system 151

Ref. No.: 534073



Foot gaskets for system 151

Weight: 1/1.1/1.1 g

Unit: 1000 pcs.

Type: 98004 degree of protection IP65

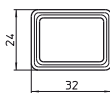
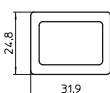
Ref. No.: 108267 material: cellular rubber, black

Type: 98011 degree of protection IP67

Ref. No.: 504078 material: silicone, transparent

Type: 98008 degree of protection IP67

Ref. No.: 526532 profiled foot gasket, material: EPDM, black



Screw ring for systems 151, 153 and 154

Ring: PBT GF, white, gasket: silicone

Weight: 11.8 g, unit: 250 pcs.

Type: 84103

Ref. No.: 529836

