



MHN-TD

MHN-TD 150W/842 RX7s 1CT

Double-ended quartz Metal-halide lamp

Product data

• General Characteristics

| | |
|----------------------|--|
| Cap-Base | RX7s |
| Cap-Base Information | na [-] |
| Bulb | TD |
| Bulb Finish | Clear |
| Operating Position | p45 [Parallel +/-45D or Horizontal(HOR)] |
| Life to 5% failures | 5000 hr |
| Life to 20% failures | 8000 hr |
| Life to 50% failures | 10500 hr |

• Light Technical Characteristics

| | |
|---------------------------|-------------------------|
| Color Code | 842 [CCT of 4200K] |
| Color Rendering Index | 85 Ra8 |
| Color Designation (text) | Cool White |
| Color Temperature | 4200 K |
| Luminous Flux Lamp EM | 12900 Lm |
| Luminous Efficacy Lamp EM | 86 Lm/W |
| Lumen Maintenance 2000h | 80 % |
| Lumen Maintenance 5000h | 75 % |
| Lumen Maintenance 10000h | 70 % |
| Luminance Average EM | 1100 cd/cm ² |
| Chromaticity Coordinate X | 370 - |
| Chromaticity Coordinate Y | 370 - |

• Electrical Characteristics

| | |
|-------------------------------|--------------|
| Lamp Wattage | 150 W |
| Lamp Wattage EM 25°C, Nominal | 150.0 W |
| Lamp Wattage EM 25°C, Rated | 150.0 W |
| Lamp Voltage | 98 V |
| Lamp Current EM | 1.8 A |
| Ignition Peak Voltage | 3500 (min) V |
| Dimmable | No |

• Environmental Characteristics

| | |
|-------------------------------|---------|
| Energy Efficiency Label (EEL) | A+ |
| Mercury (Hg) Content | 13 mg |
| Energy consumption kWh/1000h | 165 kWh |

• Luminaire Design Requirements

| | |
|-------------------|-------------|
| Pinch Temperature | 280 (max) C |
| Bulb Temperature | 650 (max) C |

• Product Dimensions

| | |
|------------------------------|----------------|
| Insertion Length B | 132.0 (max) mm |
| Overall Length C | 135.4 (max) mm |
| Diameter D | 23.0 (max) mm |
| Light Center Length L | 66.0 mm |
| Arc Length O | 17.8 mm |
| Light Center Length L [inch] | 2.60 in |
| Overall Length C [inch] | 5.33 (max) in |

PHILIPS

Diameter D [inch] 0.89 in

type and +/- 10% for CWA or electronic ballasts.]

• **Footnotes**

Footnotes HID 372 [Color characteristics may vary somewhat from one lamp type to another. Time should be allowed for the lamp to stabilize in color when it is turned on for the first time or if for any reason its operating position is changed. This may require several hours' operation, with more than one start. Lamp color and output may change temporarily if the lamp is subjected to excess vibration or shock. Lamp color characteristics may change after long accumulate operating time.]

Footnotes HID 392 [Supply volts must be +/- 5% of rated ballast line volts for reactor

• **Product Data**

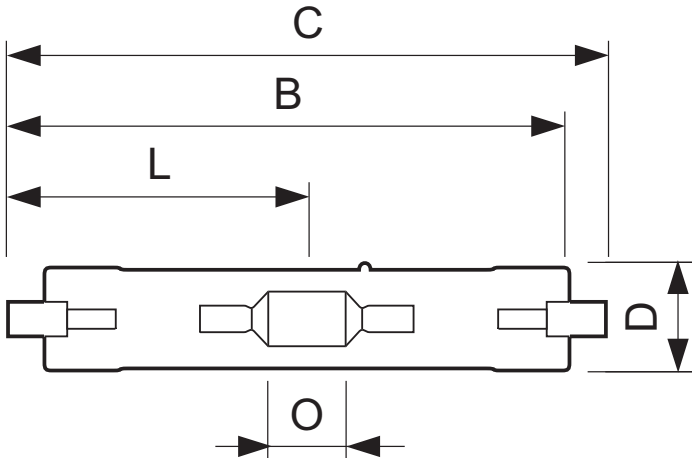
Order code 928076505193
 Full product code 928076505193
 Full product name Error EOC
 Order product name MHN-TD 150W/842 RX7s 1CT/12
 Pieces per pack 1
 Packing configuration 12
 Packs per outerbox 12
 Bar code on pack - EAN1 8711500211064
 Bar code on outerbox - EAN3 8711500211071
 Logistic code(s) - 12NC 928076505193
 ILCOS code MD/UB-150/842-H-RX7s-25/135.4
 Net weight per piece 0.030 kg

Warnings and Safety

- Use only in totally enclosed luminaire, even during testing (IEC61167, IEC 62035, IEC60598)
- The luminaire must be able to contain hot lamp parts if the lamp ruptures
- Control gear must include end-of-life protection (IEC61167, IEC 62035)

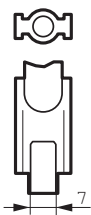
- A lamp breaking is extremely unlikely to have any impact on your health. If a lamp breaks, ventilate the room for 30 minutes and remove the parts, preferably with gloves. Put them in a sealed plastic bag and take it to your local waste facilities for recycling. Do not use a vacuum cleaner.

Dimensional drawing



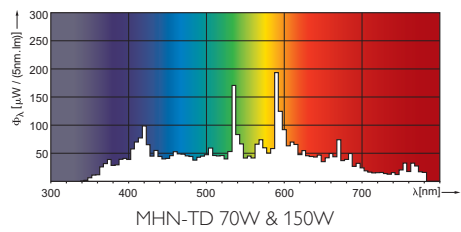
MHN-TD 150W/842 RX7s 1CT

| Product | C (Max) | D (Max) | O (Norm) |
|----------------------|---------|---------|----------|
| MHN-TD 150W/842 RX7s | 135.4 | 23.0 | 17.8 |



RX7s

Photometric data



© 2015 Koninklijke Philips N.V. (Royal Philips)
All rights reserved.

Specifications are subject to change without notice. Trademarks are the property of Koninklijke Philips N.V. (Royal Philips) or their respective owners.

www.philips.com/lighting

2015, May 12
data subject to change